



Treibhausgasinventar mit einem einfachen Online-Tool

Inventaire de GES avec un outil en ligne simple d'utilisation



ADDING SUSTAINABLE VALUE WITH ANALYTICS

Our Structure



Consulting



Software
Development

Our Team

Our diverse team of scientists, software developers and business experts combines more than 20 years of experience in GHG accounting, the implementation of climate strategies and the development of intuitive software solutions for sustainability data management.

Quick facts

Core Team: 9

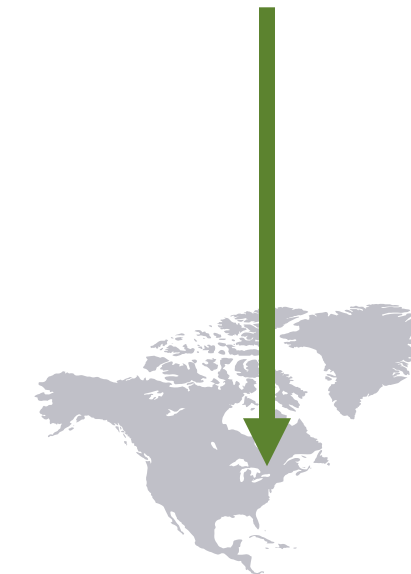
Network Partners: 40

Founding year: 2017

Our Presence

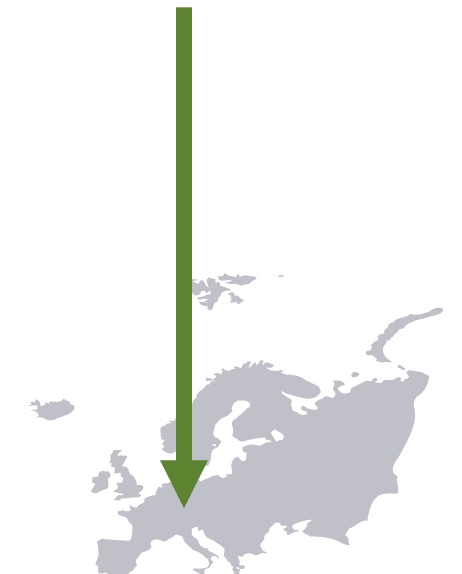
**Sulytics
Consultants Inc.**

Sherbrooke,
Québec, Canada



Sulytics GmbH

Zurich,
Switzerland



Efficient. Innovative. Personal.



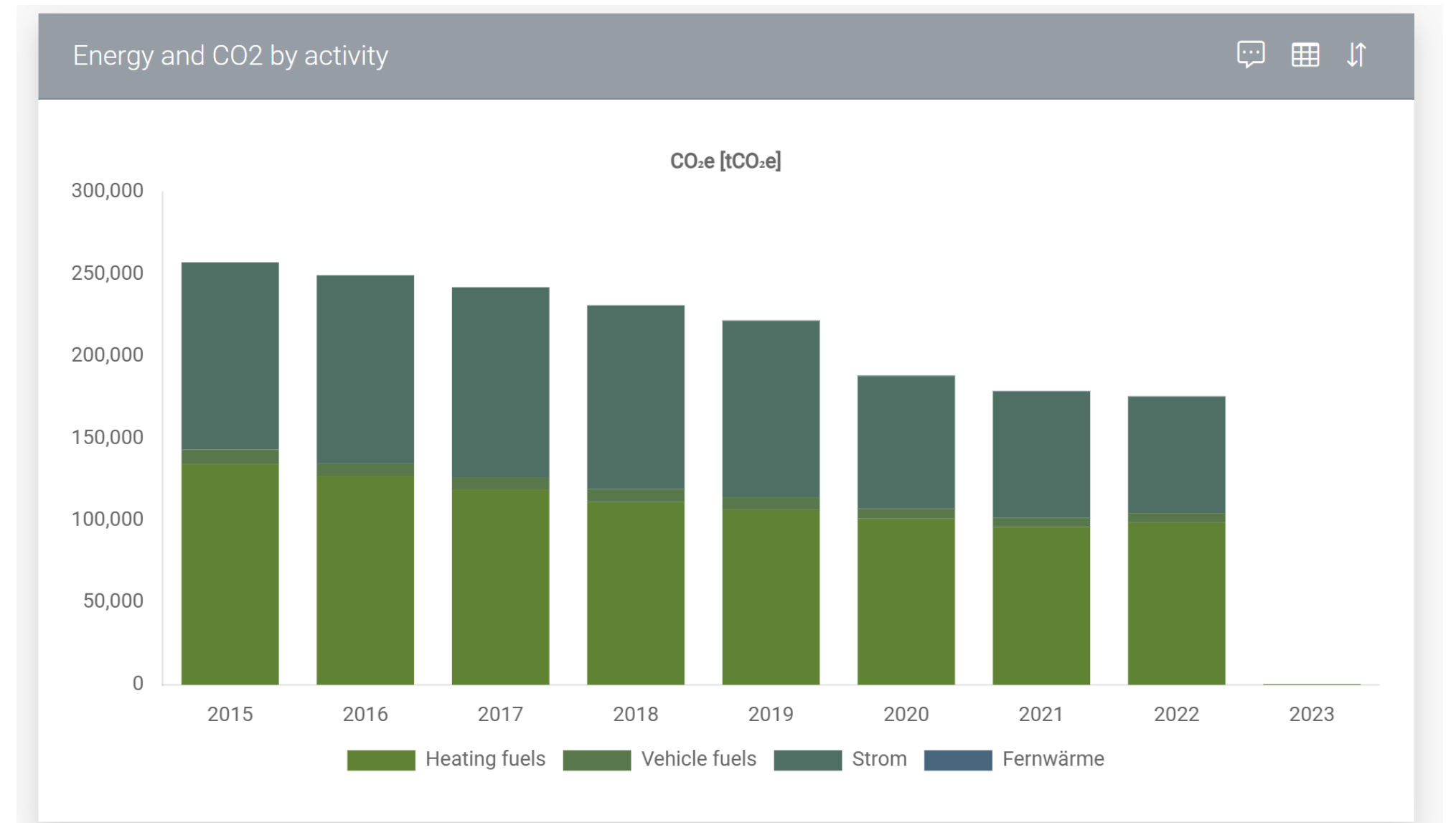
Sulytics

sulyticstool

SulyticsTool is a user-friendly, web-based platform for accounting and managing sustainability data that meets the highest modern standards.

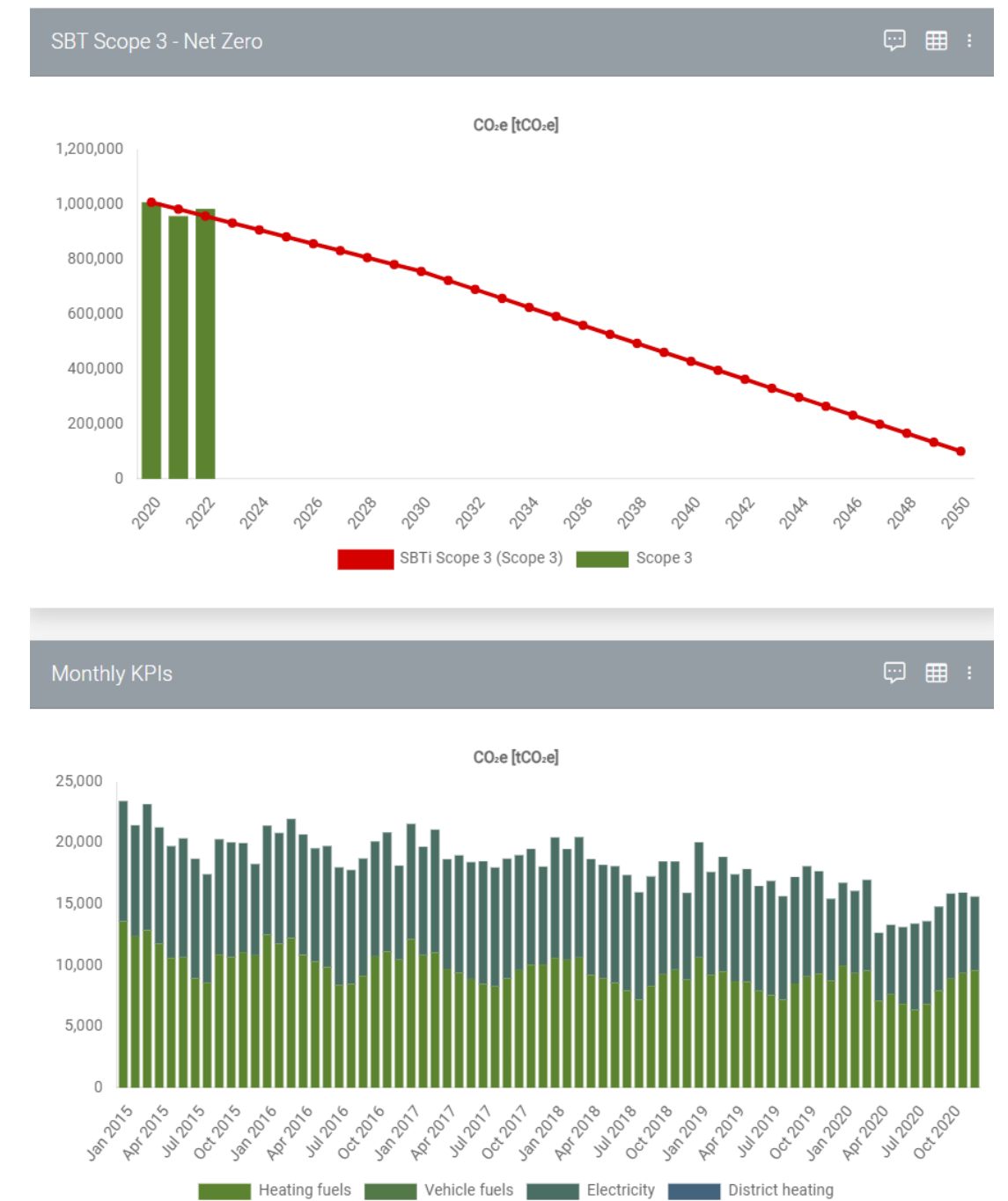
The SulyticsTool is designed to let you manage:

- **Greenhouse gas (GHG) emissions for Scopes 1, 2 & 3**
- Energy consumption and use of other natural resources
- Health and Safety (H&S) incidents and performance
- Human Resources (HR) data
- All KPIs required by CSRD



Your Advantages


- ✓ One-stop shop: **Sulytics offers software platform AND subject matter expertise**
- ✓ **Customized** client-specific setup
- ✓ Quickest implementation time on market
- ✓ Intuitive interface allows for **quick onboarding** with **minimal training** requirements
- ✓ **Convenient workflow** support helps reduce workloads of your staff
- ✓ Real-time **plausibility checks**
- ✓ Designed for **efficient independent third-party audit** of your data
- ✓ **Pre-configured reports** to make reporting requirements a smooth process
- ✓ **Excel export** and (bulk) data uploads
- ✓ **API capabilities** to connect to external data sources such as ERP systems
- ✓ **Multiple languages** (EN, DE, FR and others)



Reporting capabilities

Indicator Reports

ESRS E1-5

Edit 

	Unit	2022	2023	2024
Total energy consumption from fossil sources	kWh	38,610,396	3,055,480	200,933
Share of fossil sources in total energy consumption	%	69	86	50
Total energy consumption from nuclear sources	kWh	828,894	25,370	200,000
Share of consumption from nuclear sources in total energy consumption	%	1	1	50
Total energy consumption from renewable sources	kWh	16,834,123	464,694	0

Filter settings



Period

2022 → 2024 

Reports

ESRS E1-5 GRI 404-1


Data collection entities

> Country filter

> Group

> BU

> Sites

 Excel

Display

CSRD/ESRS



Etc....



Features

✓ Custom reports

ANALYSEN & BERICHTE

- ENERGIE UND CO2
- CDP
- REIDA REPORT
- ESG REPORT
- ROHDATEN

✓ One-push-of-a-button Sustainability Report Table

Key Environmental Indicators

	2022	2021		
Energy consumption (MWh)	16,683	37,302	-	-55.3%
Electricity	15,636	24,467	-	-36.1%
Heating and other fuels	1,048	12,835	-	-91.8%
Energy intensity (MWh/FTE)	25.4	5.9		331.9%
Greenhouse gas emissions (tCO2e)	1,270	5,492	-	-76.9%
Scope 1	237	2,354	-	-89.9%
Heating and other fuels	218	1,983	-	-89.0%
Volatile emissions (refrigerants)	19	372	-	-94.9%
Scope 2 (electricity and district energy)	982	946	-	3.8%
Scope 3	51	2,192	-	-97.7%
Business travel	-	1,967	-	-100.0%
Purchased goods and waste from operations	51	224	-	-77.3%
GHG intensity (tCO2e/FTE)	1.9	0.9		123.3%
Business travel (km/FTE)	31	2,054		-98.5%
Paper consumption (t)	12	159	-	-92.7%
Paper consumption intensity (kg/FTE)	18	25		-29.7%

✓ CDP

Consumption of purchased or acquired heat	14588	10093	24681
Consumption of purchased or acquired steam	0	0	0
Consumption of purchased or acquired cooling	0	0	0
Consumption of self-generated non-fuel renewable energy	0	0	0
Total energy consumption	33504	39805	73309

Total (renewable and non-renewable) MWh

30268
0.0 - 999999999.0
18360
0.0 - 999999999.0

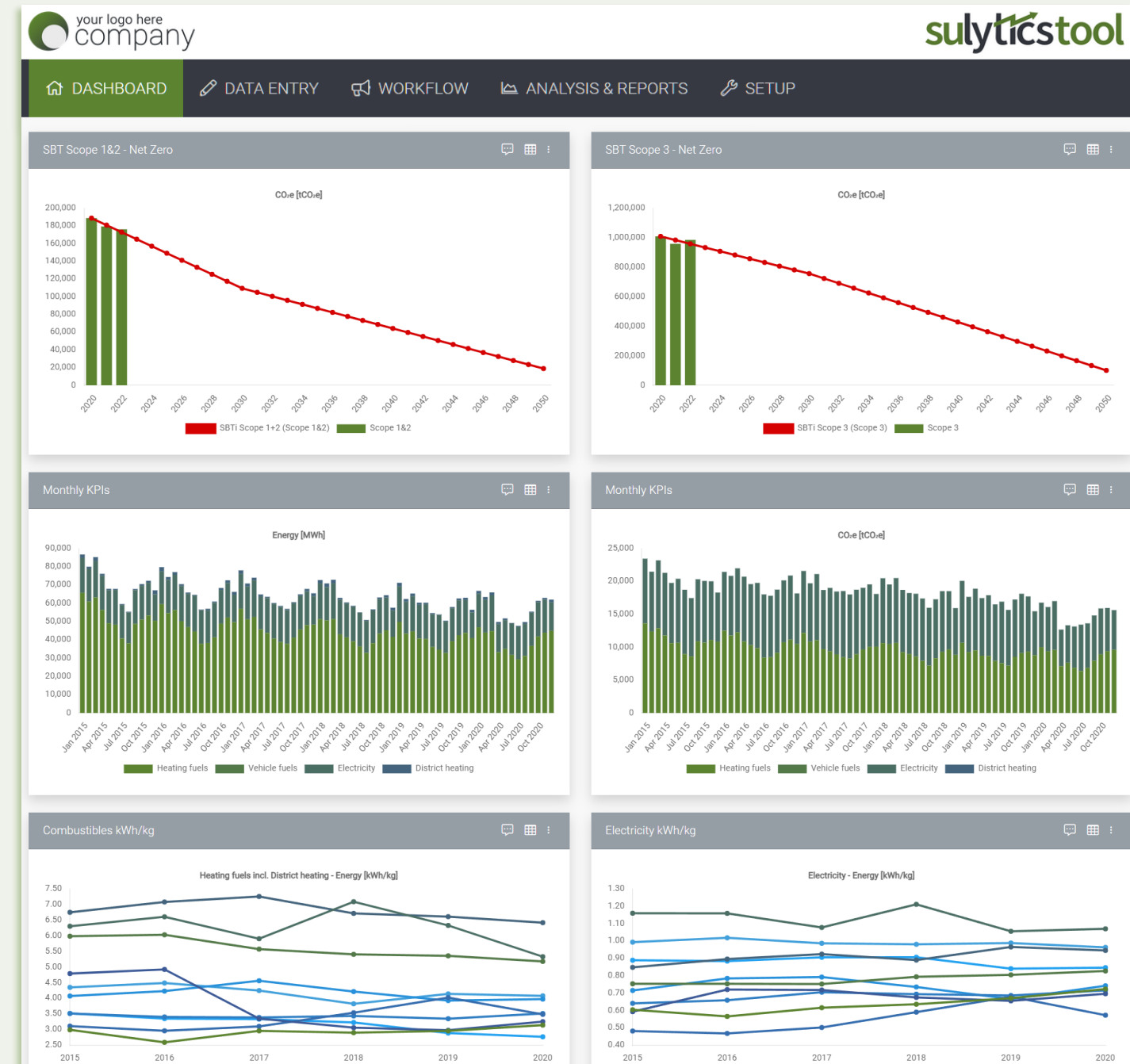
Features

✓ S and G in ESG covered

Filter results: _____ Decimal places: 2

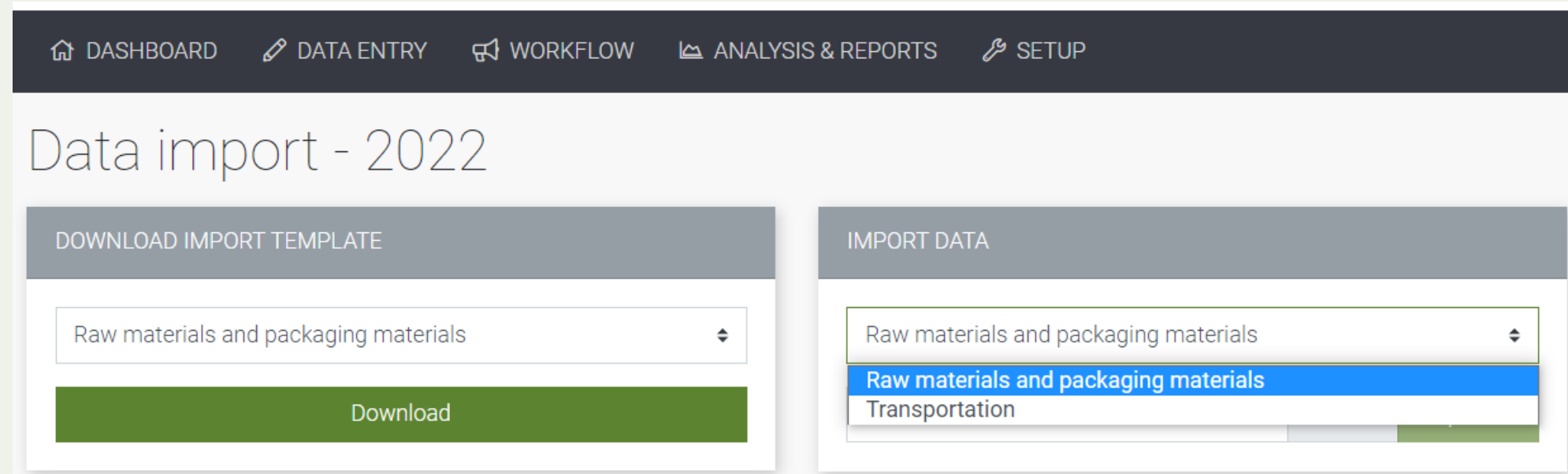
Data Item	Unit	2021	2020	2021 vs. 2020
Fatality rate per hours worked	#/h	0.00	0.00	0.00 n.a.
Accident severity rate (ASR)	days/h	41.78	63.25	-21.47 -33.94%
Lost Time Injury Frequency Rate (LTIFR)	#/h	3.66	3.21	0.44 13.75%
Male fluctuation (voluntary)	%	7.47	4.73	2.74 57.99%
Male fluctuation (involuntary)	%	2.65	7.22	-4.57 -63.32%
Female fluctuation (voluntary)	%	9.83	7.02	2.81 40.08%
Female fluctuation (involuntary)	%	2.52	4.94	-2.42 -48.96%
Under 30 fluctuation (voluntary)	%	16.03	11.24	4.79 42.60%
Under 30 fluctuation (involuntary)	%	4.10	10.19	-6.09 -59.75%
30-50 fluctuation (voluntary)	%	9.33	5.17	4.16 80.53%
30-50 fluctuation (involuntary)	%	2.92	6.32	-3.40 -53.84%

✓ Dashboards and target monitoring



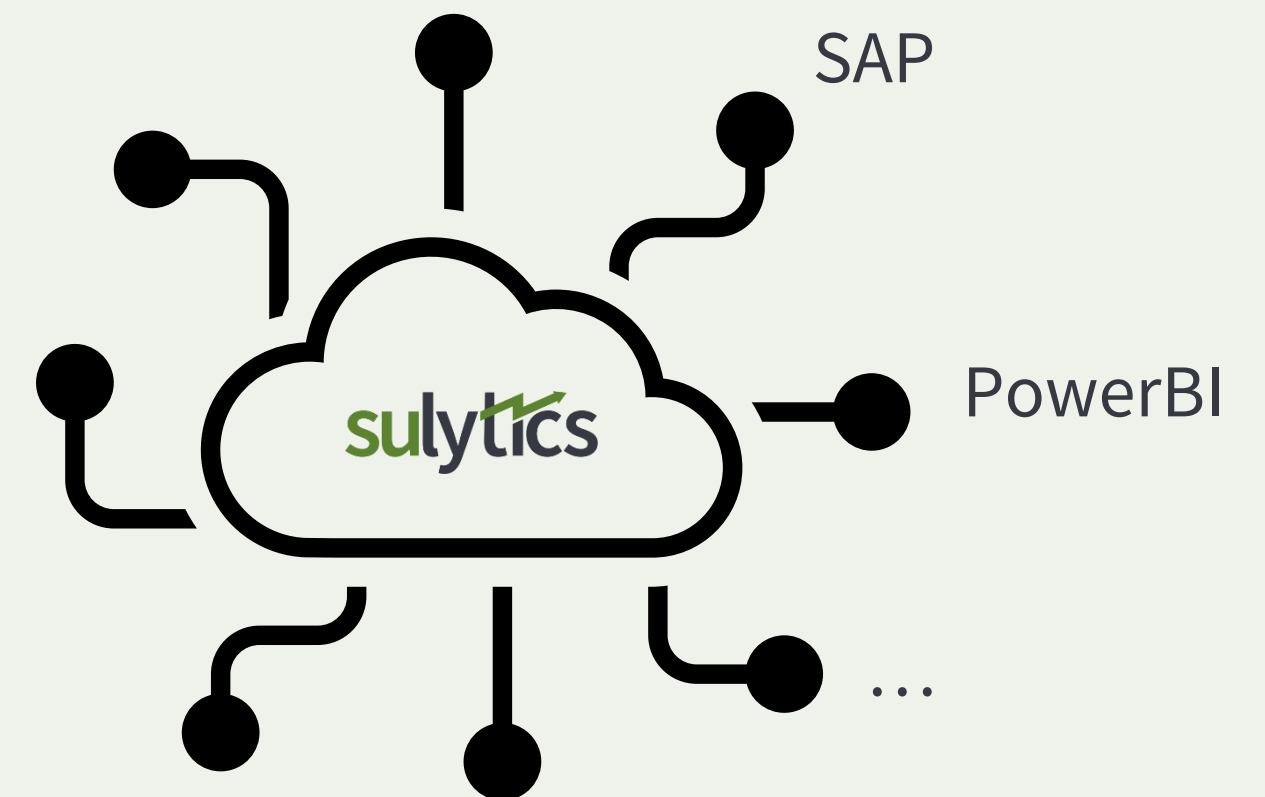
Features

✓ Tried and tested Excel imports (e.g. Scope 3 relevant data)



✓ API connections

As a modern web-based solution, the SulyticsTool can be configured to link to external data sources such as ERP systems.





Adrian, CEO and Founder

adrian.siegrist@sulytics.com

Address

Sulytics GmbH

Röntgenstrasse 44

8005 Zurich

Switzerland

Phone

+41 78 683 42 11



Online

sulytics.com